

**DATA SHEET
#SPS401**

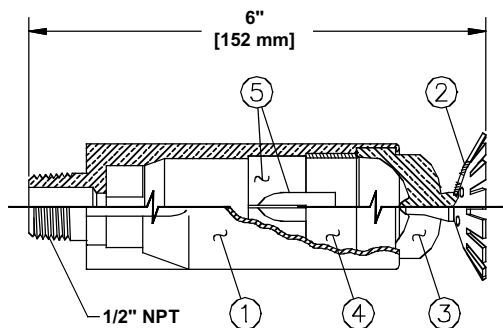
FOAM-WATER NOZZLES

"Automatic" Foam Water Nozzle

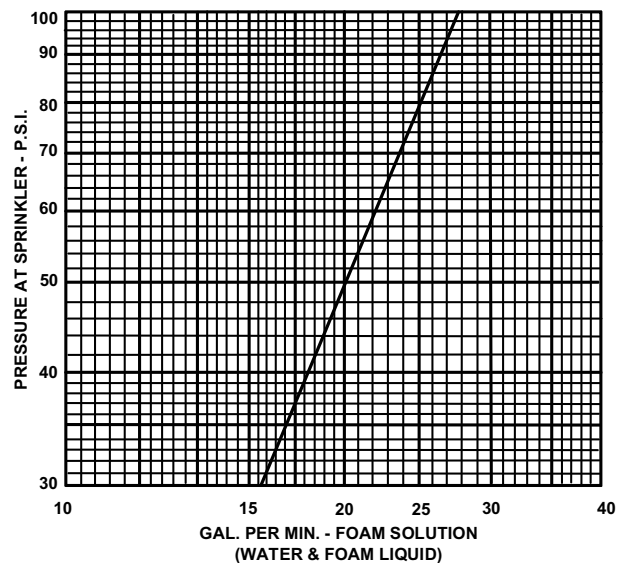
MODEL: SD-2-1/2PA - 90° - 180°

APPROVALS: Not Listed by Underwriters' Laboratories, Inc. or Approved by Factory Mutual/Research Corp.

TO SPECIFY: Furnish and install "Automatic" Sprinkler brand Foam-Water Nozzles.



**Foam-Water
Sprinkler**



GENERAL

The Foam-Water Nozzle is a new development which permits directional application of foam water.

Especially suited to exposure protection of tanks, where spillage may occur. The foam water nozzle will lay down a blanket of foam to smother spillage, while the water will give exposure protection.

The nozzle is available in two pattern angles - 90° and 120° solid cone. It operates at 30 - 50 psi with discharge characteristics the same as a standard foam water sprinkler.

FOAM-WATER NOZZLE SUBMITTAL SHEET

DESCRIPTION

Foam-Water nozzles permit the directional application of foam-water solution.

Authorities having jurisdiction and applicable standards of NFPA should be consulted before installation.

Coverage rates in GPM of foam solution per sq. ft. must meet the requirements of the approving insurance authority for type of flammable liquid and occupancy.

Galvanized pipe and cast iron fittings may be used where there are large spaces and high ceilings, such as in airplane hangars. Malleable or ductile iron fittings may be required where intensity and rate of fire build-up is likely to be severe.

SPECIFICATIONS

Thread Size: 1/2" - 14 Male NPT, ASTM B-124 Alloy 2 (59% Copper, 39% Zinc, 2% Lead).

Symbol 146-035 90° Cone, Symbol 146-036 120° Cone.

ORDERING INFORMATION FOR:

- "Automatic" Foam-Water Sprinkler

Type	Description	Symbol No.	Stock Code No.	Submittal (Check One)
Foam-Water Nozzle	90° Cone	146-035	8146035	
	120° Cone	146-036	8146136	

This information is only a general guideline. The company reserves the right to change any portion of this information without notice. Terms and conditions of sale apply and are available on request.

12/00 Printed in USA SPS401Q

"Automatic" Sprinkler Fire Protection Equipment