

“AUTO-SPRAY” NOZZLES STAINLESS STEEL

“Automatic” AUTO-SPRAY NOZZLES - Stainless Steel

MODELS: High Velocity/Full Cone/Directional
Narrow Angle - Type NA-S - 60° Pattern
Medium Angle - Type MA-S - 90° Pattern
Wide Angle - Type WA-S - 120° Pattern
Long Throw - Type LT-S - 40° Pattern

APPROVALS: UL Listed.

TO SPECIFY: Furnish and install “Automatic” Sprinkler brand “AUTO-SPRAY” NOZZLES - Stainless Steel.



DESIGN FEATURES:

For design purposes, stainless steel nozzles may be considered identical to their brass counterparts. For dimensions, discharge patterns and discharge curves, refer to data sheets for brass “AUTO-SPRAY” NOZZLES.

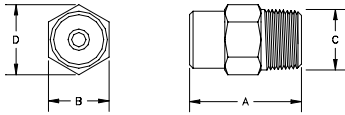
brass - with one exception: Stainless steel nozzles are indicated by the suffix “S” following the nozzle number. For example, a No. 5NA is a narrow angle in brass. The same nozzle in stainless steel is a No. 5NA-S.

DESIGNATION:

“AUTO-SPRAY” NOZZLES in stainless steel carry the same basic numbers as the corresponding nozzles in

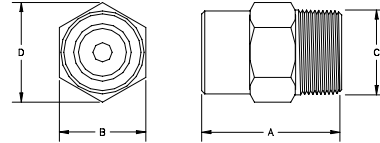
“AUTO-SPRAY” NOZZLES - STAINLESS STEEL SUBMITTAL SHEET

NARROW ANGLE NOZZLE



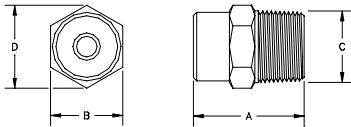
Nozzle No.	PHYSICAL CHARACTERISTICS			
	Dimensions			
	A	B	C	D
5 NA	1-7/8	1-1/16	3/4	1-7/32
7 NA	1-7/8	1-1/16	3/4	1-7/32
8 NA	1-7/8	1-1/16	3/4	1-7/32
10 NA	1-7/8	1-1/16	3/4	1-7/32
12 NA	1-7/8	1-1/16	3/4	1-7/32
14 NA	1-7/8	1-1/16	3/4	1-7/32

WIDE ANGLE NOZZLE



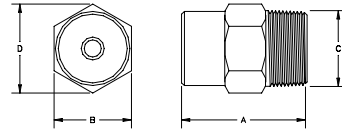
Nozzle No.	PHYSICAL CHARACTERISTICS			
	Dimensions			
	A	B	C	D
10 WA	2-3/16	1-5/16	1	1-17/32
14 WA	2-3/16	1-5/16	1	1-17/32
18 WA	2-5/8	1-11/16	1-1/4	1-15/16
29 WA	2-5/8	1-11/16	1-1/4	1-15/16

MEDIUM ANGLE NOZZLE



NOZZLE NUMBER	PHYSICAL CHARACTERISTICS			
	DIMENSIONS			
	A	B	C	D
8 MA	2-1/16	1-5/16	1	1-17/32
13 MA	2-1/16	1-5/16	1	1-17/32
15 MA	2-1/16	1-5/16	1	1-17/32
19 MA	2-1/16	1-5/16	1	1-17/32
SS MA	2-1/16	1-5/16	1	1-17/32
26 MA	2-1/2	1-11/16	1-1/4	1-15/16
28 MA	2-1/2	1-11/16	1-1/4	1-15/16
38 MA	2-1/2	1-11/16	1-1/4	1-15/16

LONG THROW ANGLE NOZZLE



Nozzle No.	PHYSICAL CHARACTERISTICS			
	Dimensions			
	A	B	C	D
15 LT	2-1/16	1-5/16	1	1-17/32
22 LT	2-1/16	1-5/16	1	1-17/32
31 LT	2-1/2	1-11/16	1-1/4	1-15/16

DESIGN DATA & ORDERING INFORMATION FOR:

“Automatic” Auto-Spray Nozzles - Stainless Steel

Nozzle No.	Pipe Connection (NPT Male)	Discharge Angle	K Factor	Discharge At 30 psi (in gpm)	Nozzle Stock Code No.	Submittal (Check One)
5NA-S	3/4"	60°	0.9	4.9	1415403	
7NA-S	3/4"	60°	1.2	6.6	1415404	
8NA-S	3/4"	60°	1.4	7.7	1415405	
10NA-S	3/4"	60°	1.8	9.9	1415406	
12NA-S	3/4"	60°	2.2	12.0	1415407	
14NA-S	3/4"	60°	2.6	14.2	1415408	
8MA-S	1"	90°	1.5	8.2	1415409	
13MA-S	1"	90°	2.3	12.6	1415410	
15MA-S	1"	90°	2.7	14.8	1415411	
19MA-S	1"	90°	3.4	18.6	1415412	
22MA-S	1"	90°	4.0	21.9	1415413	
26MA-S	1-1/4"	90°	4.8	26.3	1415414	
28MA-S	1-1/4"	90°	5.1	27.9	1415415	
38MA-S	1-1/4"	90°	7.0	38.3	1415416	
10WA-S	1"	120°	1.8	9.9	1415417	
14WA-S	1"	120°	2.6	14.2	1415418	
18WA-S	1-1/4"	120°	3.3	18.1	1415419	
29WA-S	1-1/4"	120°	5.3	29.0	1415420	
15LT-S	1"	40°	2.8	15.3	1415400	
22LT-S	1"	40°	4.1	22.5	1415401	
31LT-S	1-1/4"	40°	5.7	31.2	1415402	

This information is only a general guideline. The company reserves the right to change any portion of this information without notice. Terms and conditions of sale apply and are available on request.

01/01 Printed in USA SPS601Q