



Concealed Fire Department Connection

NNI

Flush mount double clapper fire department connection. Double clapper design ensures water supply from supplementary source from either one or two servicing hoses. Model IE-28 Auxiliary Inlet Connection allows in excess of 500 G.P.M. (1890 L/min) supplementary water supply for fire protection system.

Exposed parts of the unit are available in either polished brass or chrome finish. When ordering specify size, threads and finish of exposed parts.

Concealed Fire Department connections are used in both dry and wet interior fire protection systems. They are made up of five basic components;

1. **The body**, which is located behind the outside wall facing;
2. **The escutcheon plate**, which covers the body and wall holes and identifies the type of connection,
3. **Length(s) of pipe**, which connects the body to the outside connection or adapter (supplied by contractor). The length of this pipe is determined by how deep the body is set in the wall.
4. **The adapter**, which screws onto the pipe.
5. **Plug** which is screwed on or into the adapters.

When selecting a concealed connection a number of considerations have to be taken into account.

- **The first** is what type of system, automatic sprinkler, standpipe or wall hydrant.
- **Second**, the number of outside connections required.
- **Finally**, what is the size of the riser being serviced.

If the connections are being used in an automatic sprinkler or standpipe system which requires supplemental water be supplied through the connections, then a body with clappers must be specified. The clappers insure that if one of the servicing hoses bursts, the flow of water will not be interrupted. The clappers also allow for a single hose connection from the Fire Department pumper. If the concealed connection is used as a hydrant or source of water, a hydrant control valve must be specified.

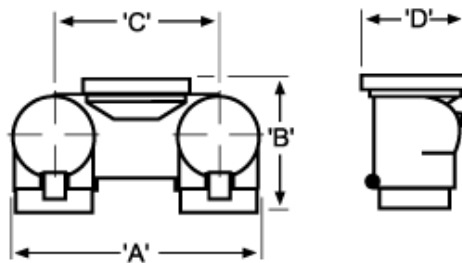


This information is only a general guideline. The company reserves the right to change any portion of this information without notice. Terms and conditions of sale apply and are available on request.

**STRAIGHT
CONCEALED
GROOVED
BODY
SIAMESE**



PRODUCT CODE
IE-28-4G



Back Outlet (STRAIGHT WAY BODY)

Specifications 4" x 2-1/2" x 2-1/2"

- A 10-1/2" (265.7 mm)
- B 7-3/8" (187.3 mm)
- C 7" (177.8 mm)
- D 5-1/8" (130.2 mm)

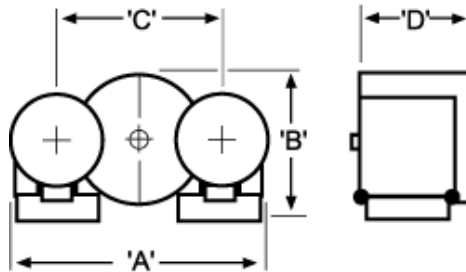
Specifications 6" x 2-1/2" x 2-1/2"

- A 10-1/2" (265.7 mm)
- B 8-1/4" (209.5 mm)
- C 7" (177.8 mm)
- D 7-1/8" (181 mm)

**90 DEGREE
CONCEALED
GROOVED
BODY
SIAMESE**



PRODUCT CODE
IE-28-4AG



Top or Bottom Outlet (ANGEL BODY)

Specifications 4" x 2-1/2" x 2-1/2"

- A 11" (279.4 mm)
- B 7-1/8" (181 mm)
- C 7" (177.8 mm)
- D 5.37" (136.4 mm)

Specifications 6" x 2-1/2" x 2-1/2"

- A 11" (279.4 mm)
- B 9-1/8" (231.9 mm)
- C 7" (177.8 mm)
- D 7.37" (187.2 mm)

ACCESSORIES

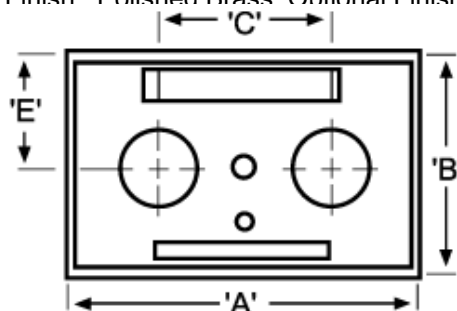
WALL PLATE



IE- 28-P

Standard plate lettering available for flush mount siamese:

- Stand Pipe
- Auto Sprinkler
- Stand Pipe / Auto Sprinkler
- Pump Test
- Wall Hydrant (IE-31)
- Finish : Polished Brass, Optional Finish : Polished Chrome.



Dimensions

- | | |
|---|-------------------|
| A | 16" (406.4 mm) |
| B | 9-1/2" (241.3 mm) |
| C | 7" (177.8 mm) |
| E | 4-1/2" (114.3 mm) |

**SNOOT AND
SWIVEL**



Snoot and swivel. 2 1/2" FNPT solid x 2 1/2" female regional hose thread swivel adaptor.

- Size : 2 1/2" x 2 1/2"
- Finish : Polished Brass
- Optional Finish : Polished Chrome

**PLUG &
CHAIN**



Brass male thread protector. Available Pin Lug and Rocker Lug. Specify male regional thread at time of order.

- Finish : Polish Brass, Polish Chrome
- Standard Size : 2 1/2"