



POW-R-MATIC

Pressure Reducing Valves

POWHATAN

NNI

DATA SHEET #PHF100

Models

- **18-457: Female NPT Inlet x Male.** (Local Fire Department Thread) Outlet with Wheel. Finish: Cast, polished trim, cast chrome, polished trim chrome.
- **18-458: Double Female.** Inlet and outlet, NPT only, with wheel. Finish: Cast, polished trim, cast chrome, polished trim chrome.
- **18-459: Double Female.** Inlet and outlet, NPT, with hand wheel. Note: Groove x groove connections optional - see Data Sheet #PHF150 for PRV with grooved connections. Finish: Cast, polished trim, cast chrome, polished trim chrome. **Note: Types 85, 90 and 95 require 7½" Handwheel.**

Description

Pow-R-Matic™ is a true combination shut-off and pressure reducing valve, available in 1½" and 2½" sizes.

The 1½" size reduces inlet pressure of 300 psi (2069 kPa) or less to working pressures of 10 through 175 psi (69-1207 kPa). The 2½" sizes are designed to reduce inlet pressures of 400 psi (2758 kPa) or less to desired working pressures from 20 through 175 psi (138-1207 kPa) under discharge or static conditions.

Pow-R-Matic™ 18-458 1½", 2½" and 18-459 2½" valves are furnished with open/closed indicators for rapid confirmation of the valves status in the system.

The Pow-R-Matic™ Valves are available with a tamper proof switch as an accessory device to hasten valve operation while monitoring its open condition. The complete switch, with bracket and housing, is available for field mounting.

Approvals

Pow-R-Matic™ Valves are Listed by Underwriters Laboratories for:

- Automatic Sprinkler Systems as floor or zone control valves.
- Standpipe Systems, Class I, II and III
- Automatic Check Valve for Dual Riser Systems, Approved by the New York City Board of Standards & Appeals 97-74-SM, the City of Los Angeles and the City of San Francisco (ULC 2½").



**18-457
FEMALE NPT INLET X MALE**



**18-458
DOUBLE FEMALE**



**18-459
DOUBLE FEMALE**

Maximum rated inlet pressure for each valve type regardless of size or model; to assure a maximum outlet pressure of 175 psi. Can still be safely hydrostatically leak tested to 300 psi for 1½" size and 400 psi for the 2½" size.

Maximum Rated Inlet Pressure

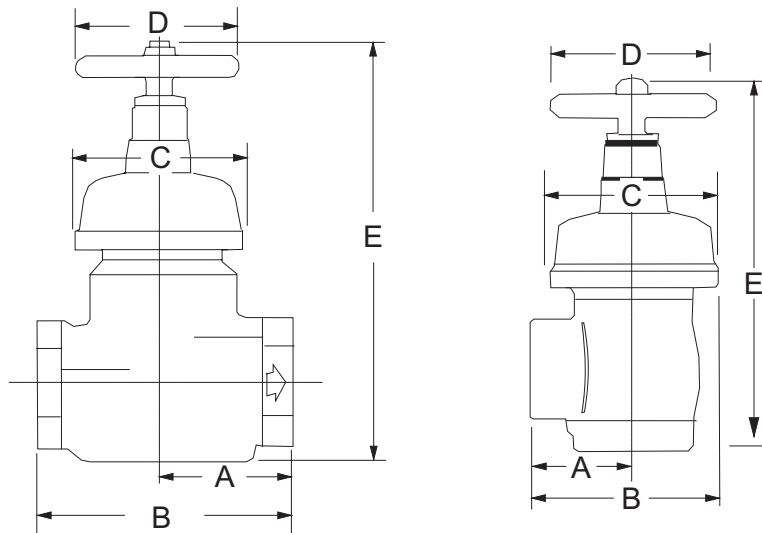
Pressure		Valve Type
Psi	KPa	
200	(1379)	55,60
225	(1551)	15,65
250	(1724)	70
275	(1896)	75
300	(2069)	30 through 50, 80
350	(2413)	85
400	(2758)	90,95

POW-R-MATIC

Pressure Reducing Valves Submittal Sheet

Dimensions

Size	Style	A	B	C	D	E/Open	E/Closed	Weight
1-1/2	18-457-458	2-7/32 (56)	4-5/32 (106)	3-7/8 (98)	3-3/4 (95)	9-25/64 (239)	8-53/64 (224)	8 lb. - 2 oz. (3.70 kg)
2-1/2	18-457-458	3-7/32 (82)	6-3/32 (155)	5-3/4 (146)	5-3/4 (146)	11-3/8 (289)	10-13/16 (275)	20 lb. - 12 oz. (9.5 kg)
2-1/2	18-459	3-7/8 (98)	7-3/4 (197)	5-3/4 (146)	5-3/4 (146)	12-3/4 (324)	12-13/16 (325)	23 lb. - 4 oz. (10.5 kg)



Specification Chart

Qty	Location		Style	Size (in.)	Inlet			Outlet Desired		Actual			Type
	Tag				Static (psi)	Residual (psi)	@ Flow of (gpm)	Static (psi)	Residual Min-Max (psi)	Static (psi)	Residual (psi)	@ Flow (gpm)	

GUIDELINES:

- Customer is requested to furnish as much information as possible to insure delivery of the appropriate valve. Flow values for inlet static and residual pressure readings are needed for all types of valves (standpipe or sprinkler). Please provide a Desired Residual Outlet pressure range.
- Styles available: 18-457, 18-458, 18-459.
- Sizes: 1 1/2" or 2 1/2" (18-459, 2 1/2" only).
- "Actual" columns to be filled out by Factory. Actual values given above have an accuracy of $\pm 10\%$.
- Valves are permanently tagged for correct floor placement.

This information is only a general guideline. The company reserves the right to change any portion of this information without notice. Terms and conditions of sale apply and are available on request.