



WALL HYDRANTS



23-283

Single Outlet Connection

Consist of: (1) 24-209 round plate branded: "Wall Hydrant", (1) 23-272 - 2-1/2 female x 2-1/2" male connection, or 3" Female NPT x 2-1/2" Male hose thread - specify (1) 17-126 cap with drain.

Specify: Plate brand, male hose thread and finish.

Finish: Polished or chrome.



21-195

Wall Hydrants

Consist of: (1) 26-294 body 4" or 6", no clappers, (2) 2-1/2" male outlets.

(1) 24-209 escutcheon plate branded: "Wall Hydrant", and (2) 17-126 caps with chains.

Escutcheon plate for 4" inlets is 9-1/4" diameter. Escutcheon plate for 6" inlet is 11-1/4" diameter.

Finish: Cast, polished or chrome.



22-230

Concealed Type Wall Hydrant

Without clapper. It is a complete unit consisting of the following six parts; (1) 23-389 Straight Body or 23-390 Angle Body. (1) 24-386 Plate branded: Wall Hydrant. (2) 23-272 Female x male connections. (2) 17-126 Pin Lug Caps with chains.

Specify: Threads, type of body, finish of exposed parts. Exposed parts polished or chrome.

Connections are attached to the body by pipe nipples which are furnished by the contractor completing the installation.



23-231 - Square 7" X 7"

23--264 - Round 6-3/4"

These are complete units. Threaded female 1-1/2" NPT on back and 2-1/2" NH on face. With cap, chain and 7/8" x 24" long extension rod fitted with special coupling for attachment to stem of gate valve.

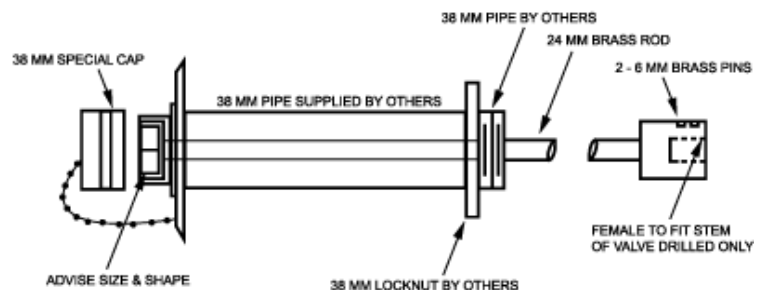
Finish: Polished or chrome.

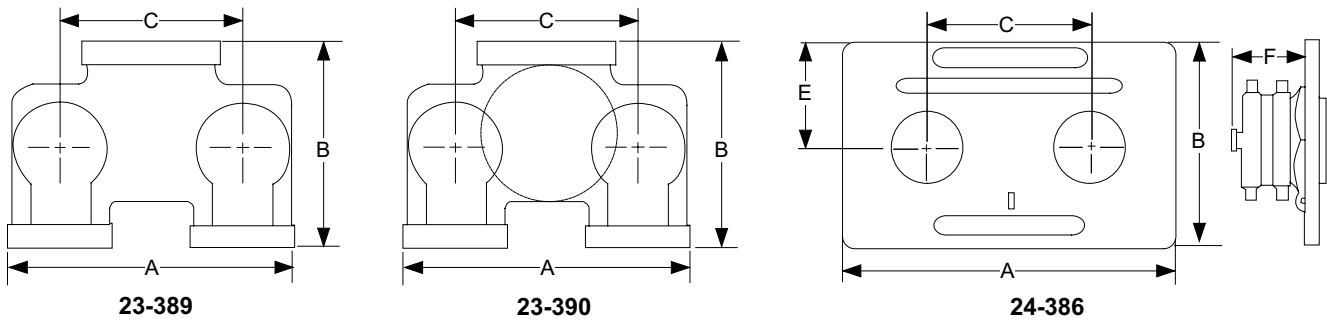


16-299

Tee Handle Valve Control Wrench

Has 15/16" square opening for use with 23-231 and 23-264 hydrant valve controls.

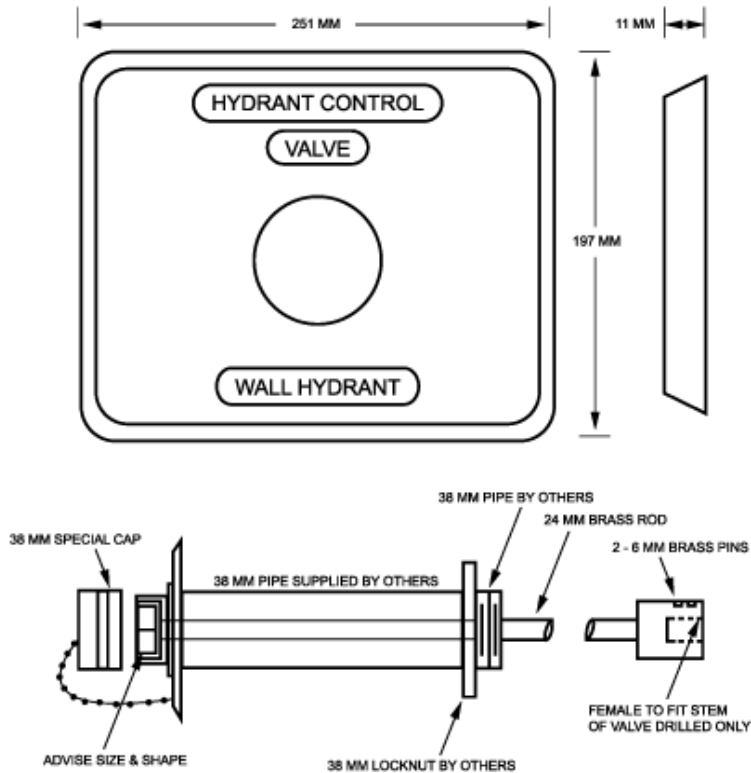




Item	Style	A	B	C	E	F
Wall Plate	24-386	14	8	7-5/8	4-15/16	3-5/8
	mm	(355)	(203)	(194)	(125)	(92)
Size	Straight Way Body 23-389			Angle body 23-390		
	A	B	C	A	B	C
4 X 2-1/2 X 2-1/2*	11-1/2	6	7-5/8	12	7-1/4	7-5/8
	(282)	(165)	(194)	(304)	(184)	(194)
6 X 2-1/2 X 2-1/2	11-1/8	7-1/8	7-5/8	12	9-1/2	7-5/8
	(282)	(187)	(194)	(304)	(241)	(194)
4 X 3 X 3^	12-1/4	8-1/8	7-5/8	12	7-1/4	7-5/8
	(311)	(206)	(194)	(304)	(184)	(194)
6 X 3 X 3^	12-1/4	8-3/4	7-5/8	12	9-1/2	7-5/8
	(311)	(222)	(194)	(304)	(241)	(194)

* UL Listed

^ Approved by New York City Board of Standards and Appeals



This information is only a general guideline. The company reserves the right to change any portion of this information without notice. Terms and conditions of sale apply and are available on request. 10/01 Printed in USA PHF1100.QXD