

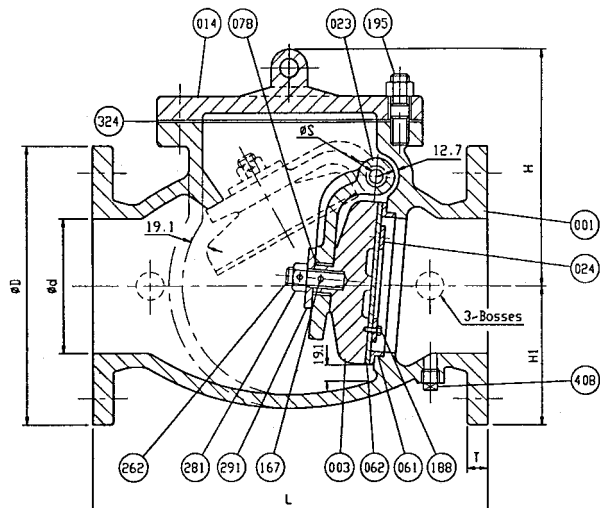
120U CAST IRON SWING CHECK VALVE

- ❖ Flanged End ❖ Resilient Wedge
 - ❖ UL/FM Listed ❖ Epoxy Coated - Internal & External
- ## 175 NON-SHOCK WOG CWP

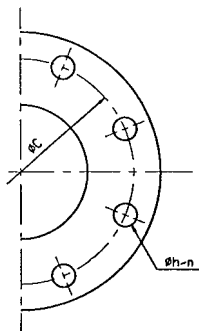
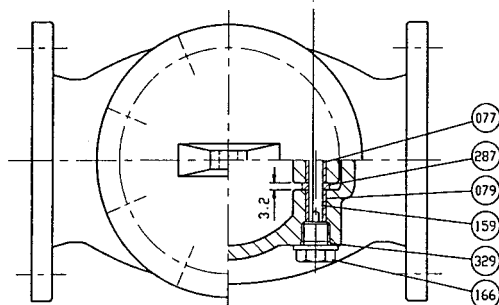
Applications: Potable Water Systems, Fire Line Loops, Pump Stations



ASTM Class A126 CLB
Flanges conform with ANSI B16
ISO-9002



Drilled and threaded hole in each end of the hinge pin



MATERIAL SPECIFICATIONS

NO.	PART	MATERIAL	ASTM DESIGNATION
001	Body	Cast Iron	A 126 Class B
003	Disc	Cast Iron	A 126 Class B
014	Cover	Cast Iron	A 126 Class B
023	Arm	Cast Iron	A 126 Class B
024	Seat Holder	Bronze	B 62
061	Body Seat Ring	Bronze	B 62
062	Disc Seat Ring	Rubber (BUNA-N)	D2000 AA 7014
077	Arm Bushing	Bronze	B 62
078	Arm Disc Bushing	Bronze	B 62
079	Body Bushing	Bronze	B 62
159	Hinge Pin	Stainless Steel	A 276 Type 304
166	Plug (A)	Brass	B 36
167	Roll Pin	Stainless Steel	A 276 Type 304
188	Disc Seat Bolt	Stainless Steel	A 276 Type 304
195	Cover Stud & Nut	Steel	A 307 Grade B
262	Disc Stud	Brass	B 36
281	Disc Nut	Brass	B 36
287	Spacer	Bronze	B 62
291	Washer	Brass	B 36
324	Cover Gasket	Rubber (BUNA-N)	D2000 AA 7014
329	O-Ring	Rubber (BUNA-N)	D2000 AA 7014
408	Plug (B)	Malleable Iron	A 47

DIMENSIONS & WEIGHTS

SIZE INCH	ANSI B16.1 CL. 125									APPROX. WT. LBS.
	L	ϕD	ϕC	ϕh	n	T	H	H1	ϕS	
2-1/2"	8.50	7.00	5.50	.75	4	.69	6.58	3.51	.37	44
3"	9.50	7.50	6.00	.75	4	.75	7.49	3.76	.37	51
4"	11.50	9.00	7.50	.75	8	.94	8.31	4.51	.37	80
6"	14.00	11.00	9.50	.87	8	1.00	10.60	5.50	.63	152
8"	19.50	13.50	11.80	.87	8	1.13	12.21	6.76	.75	313
10"	24.50	16.00	14.25	1.00	12	1.19	13.87	8.00	.87	462
12"	27.50	19.00	17.00	1.00	12	1.25	16.27	9.52	.87	660

