



Model CVA CHECK VALVES

NNI



DESCRIPTION

Model CVB-1 Grooved End Swing Check Valve has a lightweight high density cast iron body and solid bronze, rubber faced swing clapper. The grooved ends make for a clean, fast, and easy installation using only lubricant and a socket wrench. This type of connection provides for expansion and contraction allowance, joint deflection to compensate for misalignment, and an installed cost savings of 10% to 30%.

OPERATION

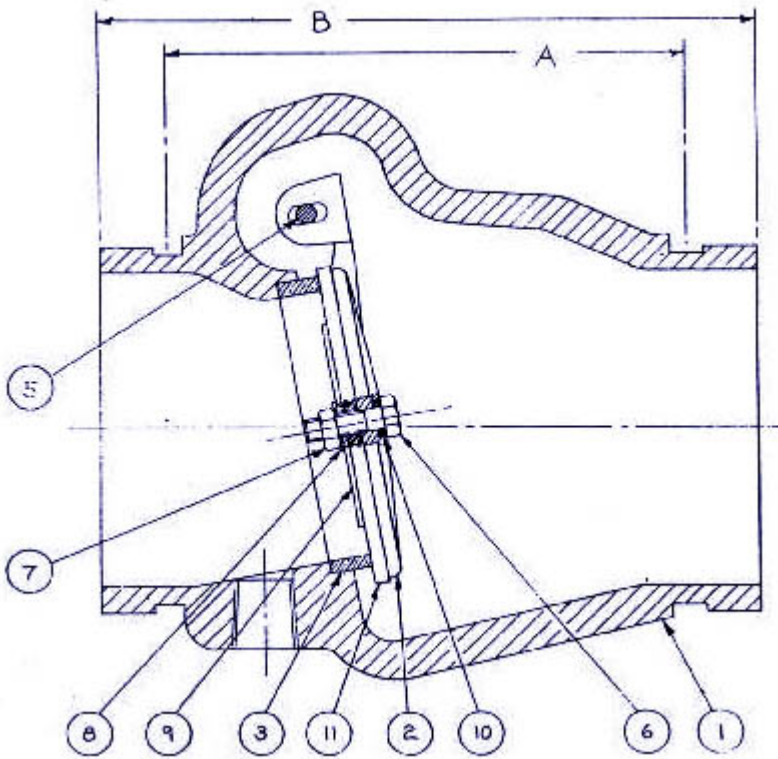
The Firematic Model CVA Check Valves are designed for installation in the water piping of fire protection systems, where the working pressures do not exceed 250 Psi. The check valves are gravity operated and may be installed in a vertical or horizontal position.

The Model CVA Check Valve is installed with standard steel pipe with cut grooves, or light wall steel pipe with rolled grooves, using two standard rubber-gasket grooved couplings.

A 1/2" NPT connection is provided at the bottom of the check valve inlet for a 1/2" ball drip.

CHECK VALVES

UL/FM Grooved Check Valves



1. Body
2. Clapper
3. Seat Ring
4. Bushing (Not Illustrated)
5. Clapper Pin
6. Retaining Screw
7. Nut
8. Lockwasher
9. Retainer
10. O-Ring
11. Clapper Seal

Dimension			
Valve Size	2½"	3"	4"
A	5-9/16"	5-7/8"	6-9/16"
B	7-1/32"	7-1/2"	8-3/16"

FRICTION LOSS in P.S.I.			
G.P.M..	2½"	3"	4"
100	0.59	-	-
200	2.79	-	-
250	3.78	1.03	-
300	5.38	1.38	-
400	-	3.71	-
450	-	3.39	-
600	-	-	1.23

This information is only a general guideline. The company reserves the right to change any portion of this information without notice. Terms and conditions of sale apply and are available on request.