



DRY PIPE VALVES



Model 39 Dry Pipe Valves

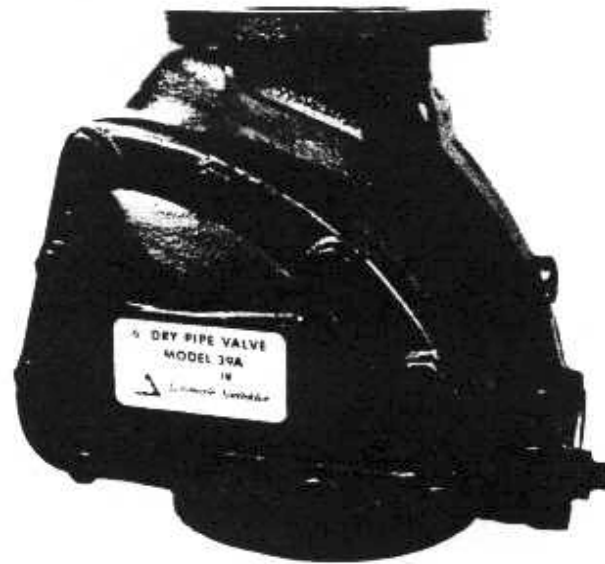
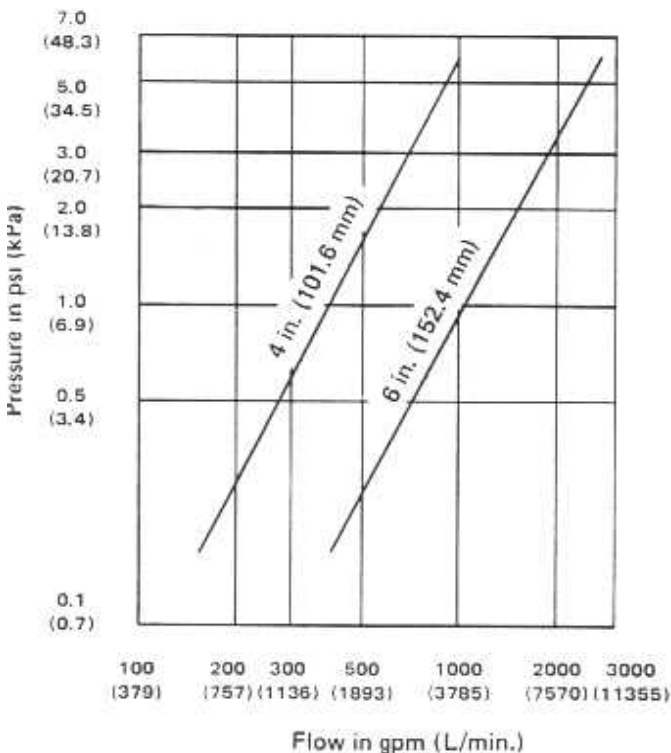
- Flange / Flange – for Vertical Installation Only
 - 4" (101.6 mm) Model 39
 - 6" (152.4 mm) Model 39A
- Class 125 Flanged Inlet & Outlet – 175 psi WWP (1206.6 kPa or 12.1 bars)
- Basic Trim Setup – with Manual Control Connections
- Trim Options:
 - Automatic Control Connections
 - Nitrogen Cylinders & Connections
 - Air Maintenance Device
 - Accelerator / Accelerator Trim Setup
- UL Listed – FM Approved
- ULC Listed – FOC Approved – 4" Model 39 Only

Pressure Loss:

For use in hydraulic calculations, the pressure loss through the dry pipe valve may be expressed as equivalent feet of pipe:

4" Valve = 22 ft
6" Valve = 26 ft

Pressure Loss Curves:



DRY PIPE VALVE ASSEMBLY
6" Model 39A Illustrated

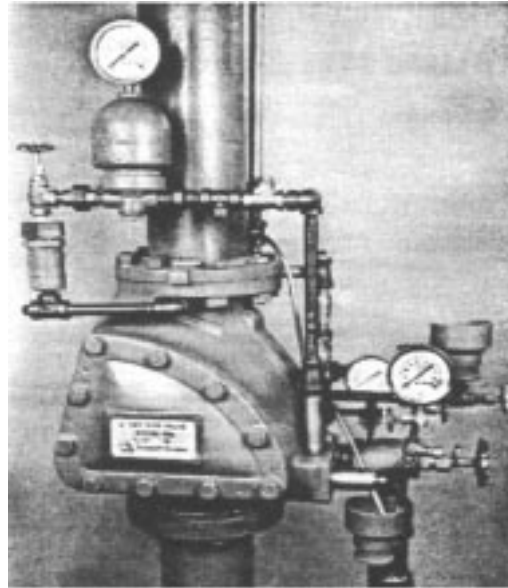
Conversion Factors:

- 1 inch = 25.4 millimetres (mm)
- 1 psi = 6.895 kilopascals (kPa)
0.0689 bar
- 1 gallon = 3.785 litres (L)

Flow in gpm (L/min.)
Contact for pricing on large quantities or items not listed. Prices subject to change without notice.
For order dial Toll Free @1-877-NNI-FIRE (1-877-664-3473) or Fax @ 305-757-1902



DRY PIPE VALVES



DRY PIPE VALVE with Basic trim Setup and Accelerator/Accelerator Trim Option- 6" Model 39A shown

Dry Pipe Valves		
P/N	Description	Net Price
DRY4F	4" Model 39 Dry Pipe Valve (Flange/Flange)	\$649.00
DRY4G	4" Model GTO Dry Pipe Valve (Flange/Groove)	\$649.00
DRY6F	6" Model 39A Dry Pipe Valve (Flange/Flange)	\$789.00
DRY6G	6" Model GTO Dry Pipe Valve (Flange/Groove)	\$789.00
8039705	6" Model 39 Dry Pipe Valve-FOC Approved Only(FI)	\$839.00
Dry Pipe Valve Trim		
P/N	Description	Net Price
DRY4T	4" Basic Trim - Manual Air Supply	\$299.00
DRY6T	6" Basic Trim - Manual Air Supply	\$299.00
Note: Basic Trim to be used for owner's air supply, nitrogen source, or from any manually operated air compressor.		
Automatic Control Connections		
1404861	4" & 6" Trim - Automatic Control Connections	\$99.00
Note: To connect to Basic Trim Setup for the air supply from an automatic air compressor serving only one dry system.		
Air Maintenance Device		
8039760	Air Maintenance Device - Model A-1	\$177.00
Note: For connecting to Basic Trim to provide automatic control from the owner's air, nitrogen source, or from an automatic air compressor serving one or more systems.		
Nitrogen Cylinder Connections		
1404819	4" & 6" Trim - Nitrogen Cylinder Connections	\$159.00
Note: Nitrogen supply source & trim to connect to automatic control connections or an air maintenance device when supplying nitrogen to more than one system.		
Accelerator - Model 1 & Trim		
P/N	Description	Net Price
8085701	Accelerator (Without Trim)	\$199.00
8039441	4" Trim for accelerator with Anti-Flooding Device	\$139.00
8039642	6" Trim for accelerator with Anti-Flooding Device	\$144.00
8039640	Anti-Flooding Device 39-641	\$82.50



ACCELERATOR



ANTI-FLOODING DEVICE

Contact for pricing on large quantities or items not listed. Prices subject to change without notice.

For order dial Toll Free @ 1-877-NNI-FIRE (1-877-664-3473) or Fax @ 305-757-1902