



## OUTSIDE SCREW & YOKE RESILIENT WEDGE GATE VALVE STYLE 722-U



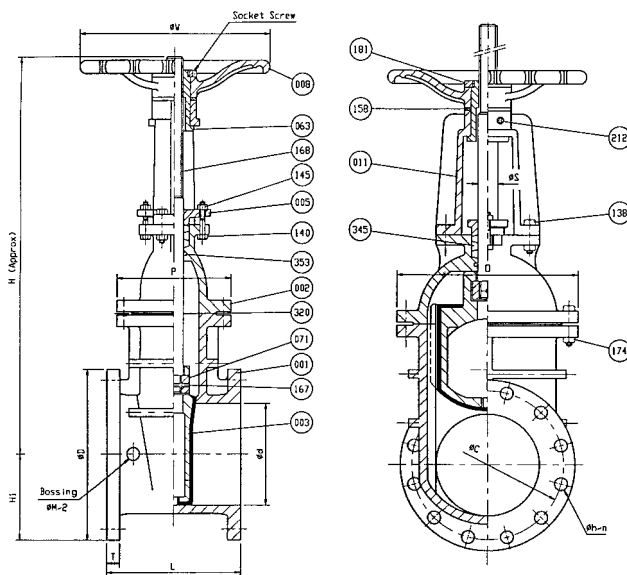
### FEATURES

- Meets or exceeds all requirements of AWWA C509
- Painted as standard
- Epoxy coated inside and out to AWWA C550 upon request
- Flanged ends to ANSI B16.1 Class 125
- Working Pressure:
  - 2-1/2" - 4" 200 Psi non-shock cold water
  - 6" - 10" 175 Psi non-shock cold water

### DIMENSIONS & WEIGHTS

ANSI B16.1 CL. 125															
SIZE INCH (d)	L	ØD	ØC	Øh	n	T	ØS	H	H1	ØW	ØM	t	O	P	APPROX. WT. LBS.
2.5"	7.50	7.00	5.50	.75	4	.69	1.00	13.12	3.51	7.09	1/2 pt	3	6.70	5.63	50
3"	8.00	7.50	6.00	.75	4	.75	1.00	15.05	3.76	7.09	1/2 pt	3	7.25	5.99	64
4"	9.00	9.00	7.50	.75	8	.94	1.13	18.68	4.51	9.85	1/2 pt	4	8.79	6.42	96
6"	10.50	11.00	9.50	.87	8	1.00	1.25	24.94	5.50	11.82	3/4 pt	4	11.35	7.72	162
8"	11.50	13.50	11.75	.87	8	1.13	1.38	31.01	6.76	13.59	3/4 pt	4	14.14	8.94	280
10"	13.00	16.00	14.25	1.00	12	1.19	1.73	38.10	8.00	16.04	1 pt	4	16.63	9.53	457
12"	14.00	19.00	17.00	1.00	12	1.25	1.73	43.50	9.52	17.73	1 pt	6	20.33	11.43	737

### MATERIAL SPECIFICATIONS



NO. PART	MATERIAL	ASTM DESIGNATION
001 Body	Cast Iron	A 126 Class B
002 Bonnet	Cast Iron	A 126 Class B
003 Disc	Cast Iron & Rubber (Buna-N)	A 126 Class B & D 2000 AA 6014
005 Gland	Cast Iron	A 126 Class B
008 Hand Wheel	Cast Iron	A 126 Class B
011 Yoke	Cast Iron	A 126 Class B
063 Yoke Sleeve	Bronze	B 62
071 Stem Nut	Bronze	B 62
138 Yoke Bonnet Bolt & Nut	Steel	A 307 Grade B
140 Gland Bolt	Steel	A 307 Grade B
145 Gland Nut	Stainless Steel or Brass	A 276 Type 304 or B36
158 Hand Wheel Washer	Bronze	B 62
167 Roll Pin	Stainless Steel	A 276 Type 304
168 Stem	Stainless Steel or Bronze	A 276 Type 304 or B21
174 Bonnet Bolt & Nut	Steel	A 307 Grade B
181 Hand Wheel Nut	Galvanized Steel	A 307 Grade B
212 Grease Screw	Galvanized Steel	
279 Yoke Bolt & Nut	Steel	A 307 Grade B
320 Bonnet Gasket	Rubber (BUNA-N)	D 2000 AA 6014
345 Packing	Carbonized Fiber	D 4102
353 O-Ring D	Rubber (BUNA-N)	D 2000 AA 6014